

SAFETY KNIFE SECUNORM PROFI40 MDP



ORDER NOW!

Order No.	11900771.02
Knife size (L x W x H)	5.63 x 0.67 x 1.22" (143 x 17 x 31 mm)
Weight knife	2.98 oz
Basic material	Aluminium



HIGH
SAFETY

1.42" (36 mm)
cutting depth
for extra thick cutting
material, bagged
goods, etc.

Automatic blade retraction
for a high user protection

Metal detectable plastic
for optimal detection

Robust ergonomic handle
for the toughest challenges



Smooth-running slider
for right and left handers

Sturdy, stainless steel blade
for special purposes

**Abrasion resistant, uncoated
aluminium**
to protect against contamination
through paint slivers (flakes)

THE SAFER WAY TO CUT.

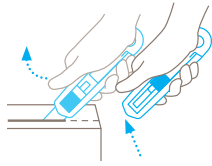
martor

MARTOR SAFETY KNIFE SECUNORM PROFI40 MDP

SAFETY TECHNOLOGY



SECUNORM
= high safety



Automatic blade retraction

The automatic blade retraction of the SECUNORM PROFI40 MDP guarantees a high degree of safety from cut injuries. As soon as you have started to cut, take your thumb off the slider. Then the blade will retract into the handle immediately after leaving the material being cut.

TECHNICAL FEATURES



Metal detectable



Tool-less blade change



Very abrasion resistant



Very ergonomic



Cutting depth



For right and left handers



Stainless

EXAMPLES OF USE



MAIN CUTTING MATERIALS



Cardboard: up to 3-ply



Wrapping, stretch and shrink foil



Plastic strapping band



Tape



Bagged goods



Foam, polystyrene

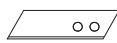


Fleece



Layers of foil or paper

MOUNTABLE BLADES



STYROPOR BLADE NO. 17940

0.020" (0.50 mm), 2.803" (71.2 mm) long, stainless, 10 in transparent pack

NO. 17940.60

PACKING INFORMATION

Packaging unit	1 in single unit box (10 knives in multipack)
Size PU	6.06 x 0.87 x 1.50" (154 x 22 x 38 mm)
Weight PU	3.43 oz
EAN Code single unit box	4002632802362
Size outer pack	4.53 x 3.15 x 6.30" (115 x 80 x 160 mm)
Weight outer pack	35,94 oz
EAN Code outer pack	4002632852367

For further information please contact us: MARTOR USA | 1235 S Kimps Ct | Ste 29 | Green Bay, WI 54313
T (920) 662-9646 x202 | F (920) 662-9648 | info@martorusa.com | www.martorusa.com