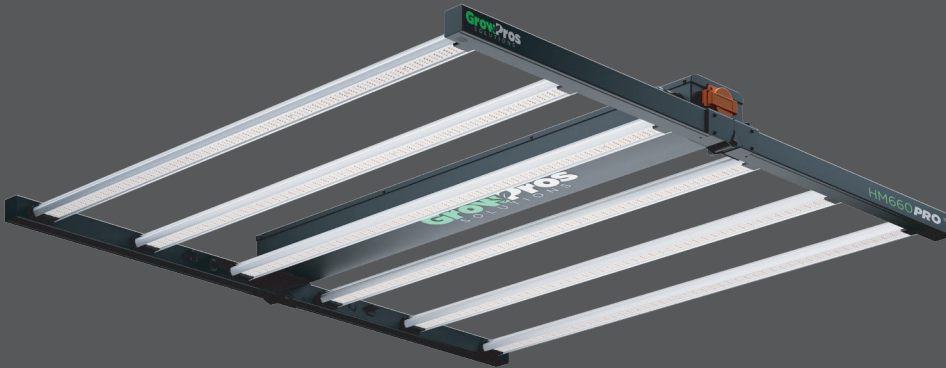


GrowPros SOLUTIONS

COMMERCIAL SOLUTIONS DESIGNED SPECIFICALLY FOR INDOOR CANNABIS CULTIVATION

HM660[®] Series



GPS-HM-660

A full-spectrum LED rack lighting solution designed for grow tents, commercial indoor cultivation and greenhouse applications. The HM660 provides the grower with control over their plants in each life cycle. It has an impressive footprint and is extremely efficient for the vegetative stage. The full-spectrum will guarantee impressive yields from the flowering stage. Perfect for a 4x4 or 5x5 grow tent or link multiple HM660s together for larger commercial applications. The HM660 Series has an increased lifespan over traditional grow light sources and cultivates healthier, happier plants.



FOR DAMP LOCATION

DIMMABLE

50,000 Life Hours

7 YEAR Limited Warranty



INTENDED APPLICATIONS

- Grow Tent
- Indoor Cultivation

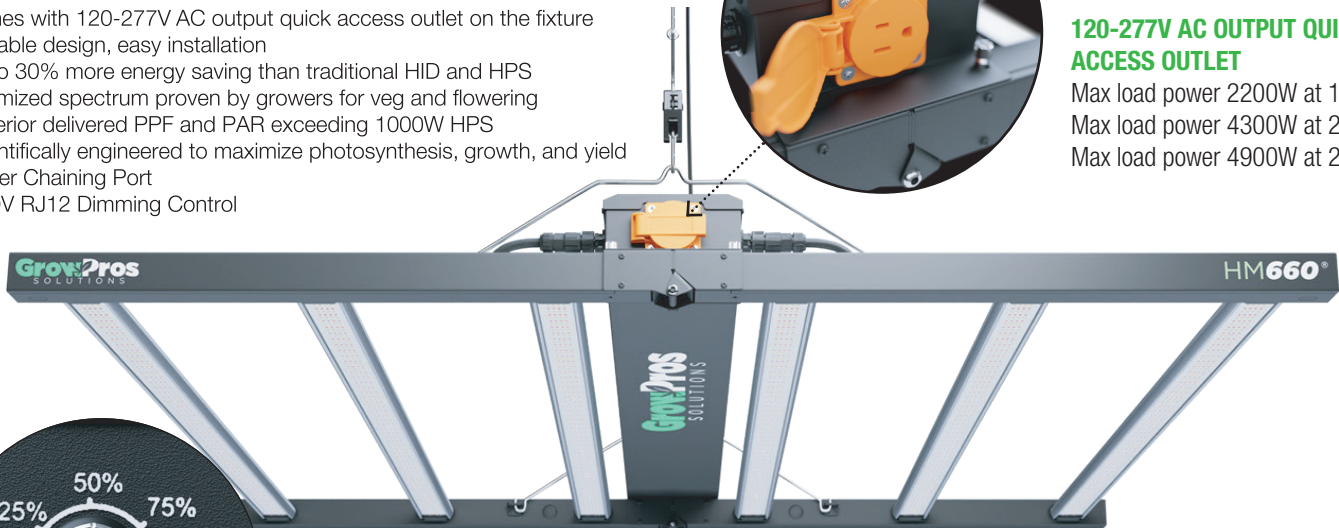
FEATURES & BENEFITS

- Compatible with TroiMaster system+Adapter LMA-14
- Add one extension bar to each side to cover 3' x 6' or 4' x 6' flood tray
- Total of 3500 pcs LED diodes per the fixture including deep red led 600NM HM diode
- Comes with 120-277V AC output quick access outlet on the fixture
- Foldable design, easy installation
- Up to 30% more energy saving than traditional HID and HPS
- Optimized spectrum proven by growers for veg and flowering
- Superior delivered PPF and PAR exceeding 1000W HPS
- Scientifically engineered to maximize photosynthesis, growth, and yield
- Power Chaining Port
- 0-10V RJ12 Dimming Control



120-277V AC OUTPUT QUICK ACCESS OUTLET

Max load power 2200W at 120V
Max load power 4300W at 240V
Max load power 4900W at 277V



DIMMER

The HM660 comes with a fully integral dimmer that you can adjust seamlessly from 0-100, and 110 percent for an extra boost of power

CONTROL SYSTEM

Works with TroiMaster Hydro control systems. You will need to use a lighting control adapter F(LMA-14) and connect them together. You need to switch each light each light to EXT mode. Switch the dimmer to EXT mode and connect the light to the LMA14 using the included RJ12 cable. Daisy Chain multiple fixtures with the included RJ12 and turn each light to EXT Mode.

WWW.WEGROWPROS.COM

Address: 4833 Lanier Road, Chino, CA 91710

Tel: (800) 383-6200 | **Email:** info@wegrowpros.com

LED LIGHTING SOLUTION FOR COMMERCIAL, INDOOR, AND GREENHOUSE APPLICATIONS

SPECIFICATIONS

WATTAGE	660W (Boost up to 720W)
INPUT VOLTAGE	Auto Sensing 100V-277V
CONTROLLER	TrollMaster Hydro-X + LMA14
CONTROL	0-10V DIMMING (0-100%)
DAISY CHAIN PORT	RJ12
MOUNTING HEIGHT	36 inch above canopy
POWER FACTOR	>95%
THERMAL MANAGEMENT	Passive
WORKING TEMPERATURE	-40°F to 122°F
IP RATING	Suitable for dry and wet locations
LIFETIME	L90 > 54,000 Hrs
WARRANTY	7 years limited
CERTIFICATIONS	ETL, FCC, DLC, CE
HEAT LOAD PER FIXTURE	2320 BTUs

MAXIMUM POWER ELECTRICAL DATA

	120V	208V	240V	277V
AC CURRENT	5.96A	3.50A	2.95A	2.71A
AC POWER	713W	700W	695W	685W
POWER FACTOR	0.998	0.983	0.975	0.945

PPFD READING

12" Height @ Max. Power Setup

4'X4' 3'X3' 2'X2' 1'X1'

530		580		800		580		530
	772			1103			771	
580		1080		1220		1080		580
			1190	1290	1190			
800	1050	1158	1218	1325	1168	1158	1050	800
			1175	1273	1175			
580		1178		1220		1075		580
	856			1103			851	
530		580		770		580		530

PERFORMANCE DATA

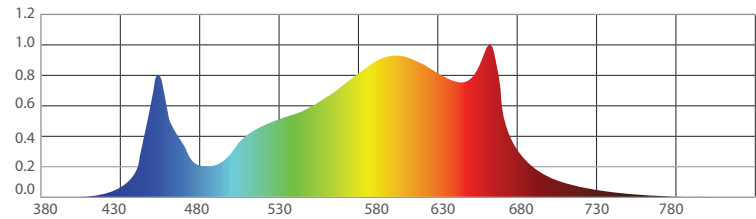
PERFORMANCE DATA	MAX. POWER @ 12"H
PPF	1820 umol/s
PPFD	1325 umol/m ² /s
PPE	2.7 umol/J

RECOMMENDED SET-UP

Flower: 4' X 4' Area, Max: 5' X 5' Area

Veg: 4' X 4' Area, Max: 6' X 6' Area

SPECTRAL DISTRIBUTION



GROSS WEIGHT: 30 lbs

WHAT'S IN THE BOX

- 1x Daisy chain data cable RJ12
- 1x 240-120V plug adapter
 - 2x steel wire sling
- 2x 1/8 Rope Ratchets
 - 4x thumb screws

DIMENSIONS

