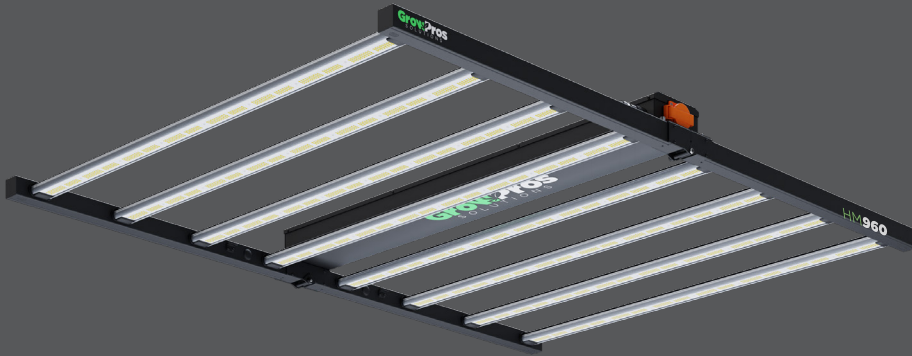


Project Name:	Type:
Note:	Date:

LED LIGHTING SOLUTION FOR COMMERCIAL INDOOR AND GREENHOUSE APPLICATIONS

HM960[®] Series

DESIGN FOR LARGE SCALE COMMERCIAL GROW HOUSE



GPS-HM-960

The HM960 was designed with commercial gardens in mind but this enormous light can also be a monster producer for the home grower. The 8x LED Bars are evenly spaced over a 5' width allowing the HM960 to bloom a 4.5x6' canopy. When combined with the HM150 Expansion bars the HM960 will flower a full 4'x8' flood tray with a single light. Ask your local hydro store for a customized light layout and commercial quote today.



FOR DAMP LOCATION



50,000 Life Hours



INTENDED APPLICATIONS

- Indoor Commercial Cultivation

FEATURES & BENEFITS

- Compatible with TroiMaster system+Adapter LMA-14
- Total of 4500 pcs LED diodes on the fixture including deep red led diode
- Perfect grow solution for 4' x 6' grow tray
- Come with 120-277V AC output quick access outlet on the fixture
- Foldable design, easy installation
- Up to 30% more energy saving than traditional HID and HPS
- Optimized spectrum proven by growers for veg and flowering
- Superior delivered PPF and PAR exceeding 1150W HPS
- Scientifically engineered to maximize photosynthesis, growth, and yield

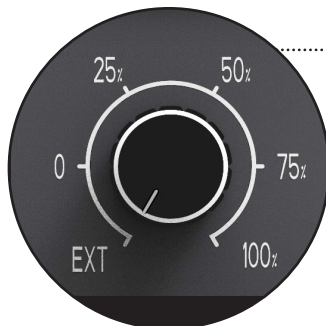
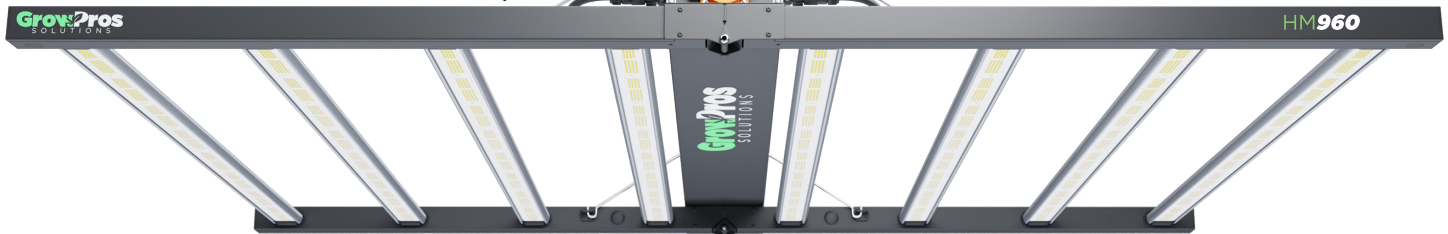


120-277V AC OUTPUT QUICK ACCESS OUTLET

Max load power 2200W at 120V
Max load power 4300W at 240V
Max load power 4900W at 277V

4'x6'

The perfect grow solution for 4' x 6' grow tray in the market today



DIMMER

The HM960 comes with a fully integral dimmer that you can adjust seamlessly from 0-100%.

CONTROL SYSTEM

Works with TroiMaster Hydro control systems. You will need to use a lighting control adapter F(LMA-14). When you put the dimmer in EXT mode, it is at 110% power, and ready to connect to the control system (If you daisy chain these lights and use a control system to control them together, you need to switch it to EXT mode).

Project Name:	Type:
Note:	Date:

LED LIGHTING SOLUTION FOR COMMERCIAL INDOOR AND GREENHOUSE APPLICATIONS

TECHNICAL SPECIFICATIONS

WATTAGE	960W
INPUT VOLTAGE	120V-277V
CONTROLLER	TrolMaster Hydro-X + LMA14
CONTROL	0-10V dimming (0-100%)
POWER FACTOR	>95%
DAISY CHAIN PORT	RJ12
THERMAL MANAGEMENT	Passive
WORKING TEMPERATURE	-40°F ~ 122°F
IP RATING	Suitable for dry & wet locations
LIFEIME	L90 > 54,000 Hrs
WARRANTY	7 year limited
CERTIFICATIONS	ETL, DLC, CE, FCC
HEAT LOAD PER FIXTURE	3276 BTU

MAXIMUM POWER ELECTRICAL DATA

AC VOLTAGE	120V	208V	240V	277V
AC CURRENT	8.3A	4.66A	4.01A	3.47A
AC POWER	985W	970W	960W	960W
POWER FACTOR	0.998	0.982	0.969	0.945

PPFD READING

12" Height @ 100% (1000W)

■ 4'X4'
 ■ 4'X5'
 ■ 4'X6'

420	491	539				575				541	439	419
			719			794			747			
				1067		1111		1097				
					1259	1268	1264					
412	764	1077	1211	1277	1317	1325	1307	1271	1208	1065	760	395
					1298	1290	1284					
				1151		1160		1122				
			1146			873		801				
459	541	593				607			565	507	463	

PERFORMANCE DATA

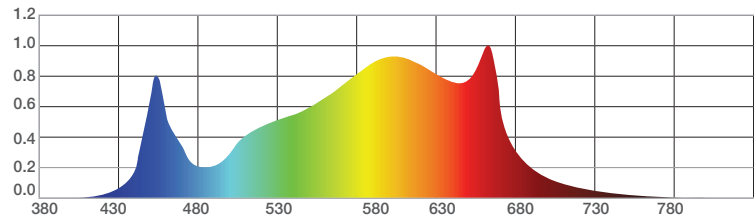
	MAX. POWER @ 12" H
PPF	2600 $\mu\text{mol/s}$
PPFD	1393 $\mu\text{mol/m}^2/\text{s}$
PPE	2.7 $\mu\text{mol/J}$

RECOMMENDED SET-UP

Flower: 4' X 6' Area , 5'x5' Area

Veg: 4' X 6' Area, Max: 4' X 8' Area, 5'x5' Area

SPECTRAL DISTRIBUTION



WHAT'S IN THE BOX

- 1x Daisy Chain Data Cable RJ12
- 1x 240-120V plug adapter
- 2x steel wire sling
- 2x 1/8 Rope Ratchets
- 4x thumb screws

DIMENSIONS

