



GC PASSTIGHT DOORS



FEATURES

- ▣ Single & Dual Door Configurations Available
- ▣ Keeps Odor In and Light Out
- ▣ Reduces Microbial Load
- ▣ Prevents Vapor Drive in Humid Climates
- ▣ Conserves CO₂
- ▣ Easy & Waterproof Washdown
- ▣ Optional Window with Blackout Cover
- ▣ Corrosion-Proof Construction
- ▣ Magnetic Lock (Optional)



Passtight Man Door with Seal and Quick Install IMP Frame Detail

Grow Controlled is proud to offer a range of doors as the standard for grow facilities. Having the ability to seal a room beyond the capabilities of a typical commercial door not only helps contain odor, but eliminates vapor drive, keeping the atmosphere isolated within a room for ultimate control. This allows the operator to maintain elevated carbon dioxide levels and reduce microbials.

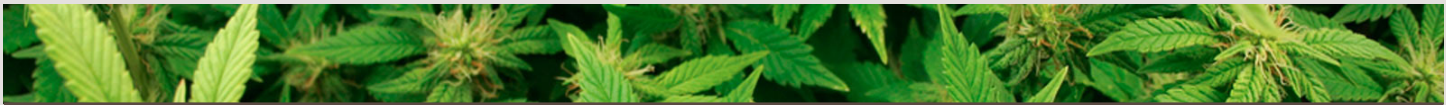
With most grow operations using insulated metal panels as standard, the Passtight door is a logical choice for a grow/veg room single or dual man door that is simple to install. No tedious fitting of a six 5.5” steel frame door in a 3” or 4” IMP wall; the sandwich design allows for speedy install and a remarkable finish for a professional look with all of the added benefits mentioned above. GC Passtight doors are economically priced and the installation time savings make them the answer for your operation.

All GC doors are constructed with an aluminum framework around the perimeter, which can optionally be heated for freezer use.

© 2018 GROW CONTROLLED, LLC. ALL RIGHTS RESERVED. CONTACT US FOR MORE INFORMATION.



G R O W C O N T R O L L E D , L L C
 100 APPLEWOOD DRIVE SPARTA MICHIGAN · SODUS NEW YORK · UNION GAP WASHINGTON · PADDOCK WOOD UK
 T 616.256.0420 · F 616.887.1128 · INFO@GROWCONTROLLED.COM · GROWCONTROLLED.COM



G C P A S S T I G H T D O O R S

S P E C I F I C A T I O N S

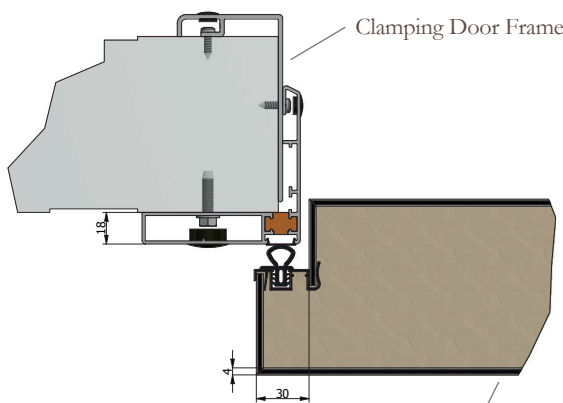
CONSTRUCTION	Door leaf constructed of a core of insulation material, covered on both sides with 4mm lacquered aluminum composite plate with a core of plastic.
STANDARD SIZES	Single: 3'x7' (37.375"x84.625"H) or 4'x8' (47.25"x96.5"H) Dual: 6'x8' (74.75"x96.5"H)
DOOR LEAF THICKNESS	4" (utility/refrigeration), 6" (freezer, special order option)
R-VALUE	4" approx. 4,03 (m ² .K/W), 6" approx. 6,21 (m ² .K/W)
COLOUR OF DOOR LEAF	Similar to RAL 9010 (white)
SEALING	Rubber profile seal complete around door perimeter
FRAME	Anodised aluminum clamping frame for wall thickness 4 - 6" or 6 - 8"
THRESHOLD	Exclusive (utility/refrigeration), Inclusive (freezer).
FRAME HEATING	Exclusive (utility/refrigeration), Door frame & threshold (freezer)
HINGES	Stainless steel/plastic rising hinges.
LOCKS	Pull fastener handle with cylinder lock on exterior/inner emergency release by means of a push button; outside fastener/handle with cylinder lock (special order).
ADDITIONAL OPTIONS	Deviating measurement, door leaf and outer frame in stainless steel, outer frame all round, window in the door, door closer, storm chain, rain hood and more.



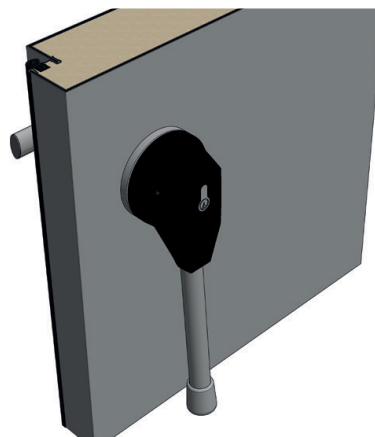
GC Passtight Inswing Mounting Option



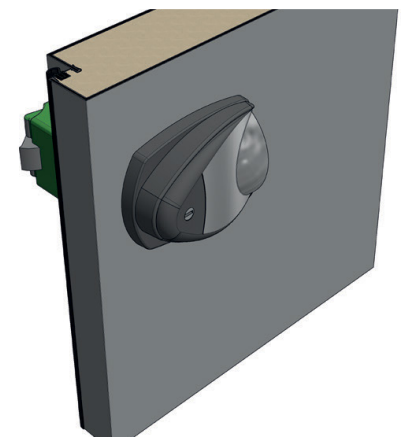
GC Dual Passtight Door w/ Overlapping Seal



4mm Painted Aluminium Composite Door Plate



Seal Handle (Special Order; Single Only)



Fastener Handle (Standard)

© 2018 GROW CONTROLLED, LLC. ALL RIGHTS RESERVED. CONTACT US FOR MORE INFORMATION.



G R O W C O N T R O L L E D , L L C
 100 APPLEWOOD DRIVE SPARTA MICHIGAN · SODUS NEW YORK · UNION GAP WASHINGTON · PADDOCK WOOD UK
 T 616.256.0420 · F 616.887.1128 · INFO@GROWCONTROLLED.COM · GROWCONTROLLED.COM