



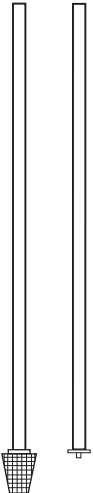
## INJECTION SYSTEMS



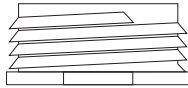
MODEL # CAP-HPF

### PARTS LIST

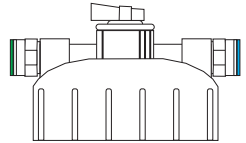
**PART# DT SET**  
QTY. 1  
(16" Length)



**PART# MBT-RB**  
QTY. 1



**PART# CAP-MBT**  
QTY. 1



**Not Included:**  
Optional PVC Glue  
Optional Thread Tape (PTFE)  
Tape Measure

**PART# CAP-LOR**  
QTY. 2



*For full cap parts diagram, please visit our website*

[www.ezfloinjection.com](http://www.ezfloinjection.com)

# DIP TUBE SIZING & CONNECTION

This kit comes with 16" length dip tubes to accommodate any model, year, or size EZ-FLO system. Please refer to the chart below for the correct length.

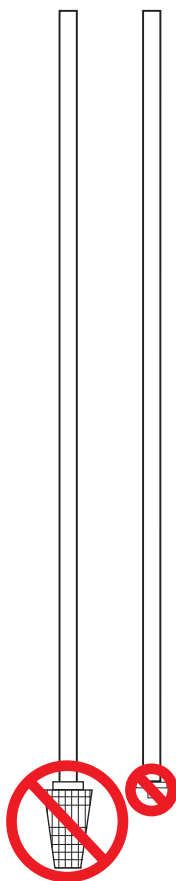
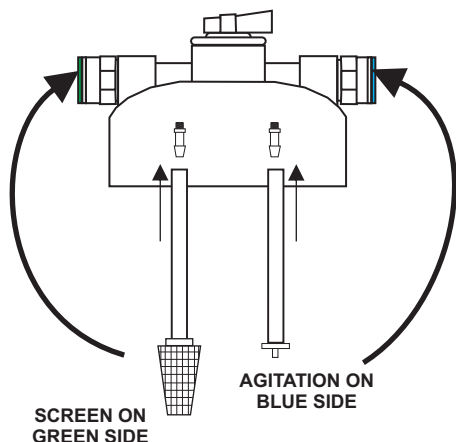
Measure only the tubing length, do not include the added length provided by the fittings.

Model #	Dip Tube Length
EZ001-FX (2005 year)	7"
EZ003-FX (2005 year)	7"
EZ005-FX	8.25"
EZ010-FX	10.5"
EZ010-HC	11"
EZ017-HC / EZ020-HC	14.5"
EZ025-HC / EZ030-HC	16"

The above lengths can be measured using the adjacent ruler or measuring tape.

Approximate length is sufficient.

Note: When attaching dip tubes to cap or inserting fittings, soaking the end of the tube in warm water will make it simpler to press on.



FITTINGS DO NOT COUNT AS PART OF LENGTH

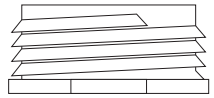


Ruler is to approximate scale

## ASSEMBLY OPTIONS: O-RING

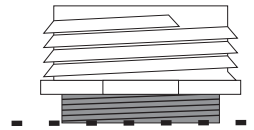
Step 1. Place the large cap o-ring on the inside of the MBT-RB. (It will bulge slightly and this is normal, the mating fitting will allow for the proper seating and compression)

### STEP 1



Step 2. Attach the MBT-RB to the existing 2" fine thread nipple on the EZ-FLO tank by simply threading on. There may be a slight bit of resistance as the o-ring moves into place.

### STEP 2



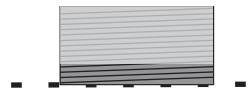
The fitting only needs to be hand tight, do not force or use a wrench, this may cause irreparable damage to your tank or parts.

## ASSEMBLY OPTION: Thread Tape (PTFE)

Step 1. Wrap the exposed 2" fine thread PVC gray nipple with 3 to 4 complete wraps of thread tape (PTFE). Always wrap in a clockwise direction.



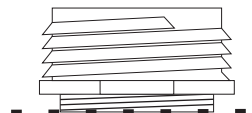
### STEP 1



Excessive wrapping may cause leaking or fracture of the parts.

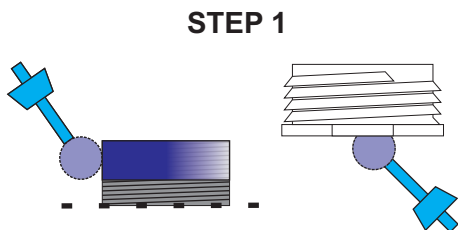
Step 2. Attach the MBT-RB to the existing 2" fine thread nipple on the EZ-FLO tank by simply threading on. The fitting only needs to be hand tight, do not force or use a wrench, this may cause irreparable damage to your tank or parts.

### STEP 2

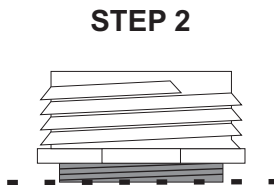


## ASSEMBLY OPTIONS: PVC Glue

Step 1. Using a suitable PVC cement and primer or combination, apply a light coating of the products to the male threads of the 2" PVC sch. 80 nipple and the female threads of the EZ-FLO MBT-RB. PVC glue will spread, do not over apply or apply to the exterior of the MBT-RB.



Step 2. Attach the MBT-RB to the existing 2" fine thread nipple on the EZ-FLO tank by simply threading on. The fitting only needs to be hand tight, do not force or use a wrench, this may cause irreparable damage to your tank or parts.

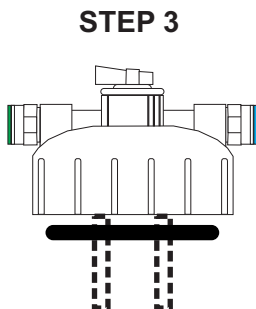


Wipe excess glue after joining.

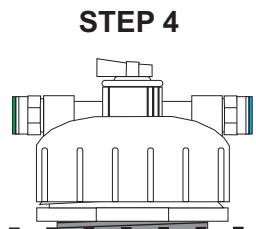
*\*Glue connections are permanent and cannot be repaired if improperly completed.*

## FINAL STEP - ATTACH CAP TO TANK

Step 3. Place one large cap o-ring on the underside of the CAP-MBT.



Step 4. Attach to the MBT-RB. (This step assumes you have already properly sized your dip tubes. Please reference page 2 for this process and size chart.)



Refer to your products Installation and Operating Guide for further information on product use.