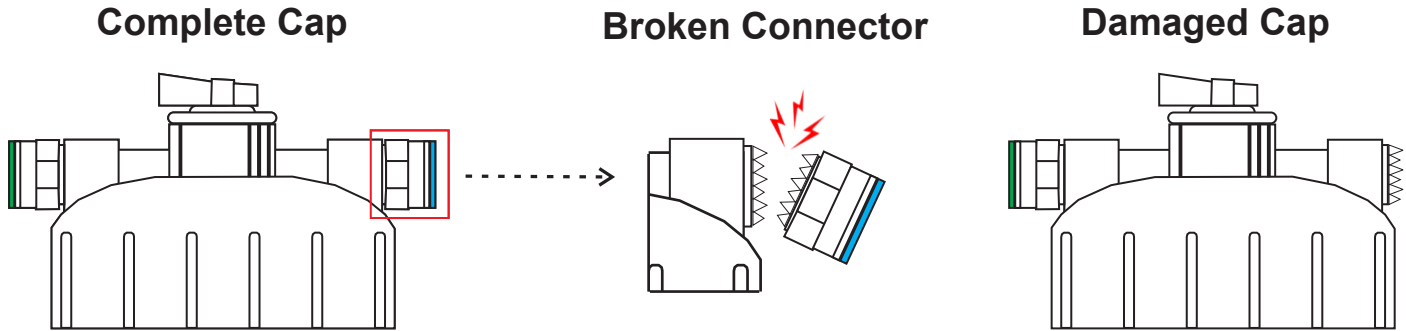


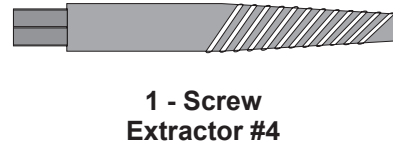
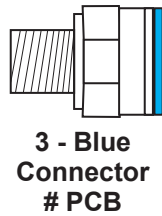
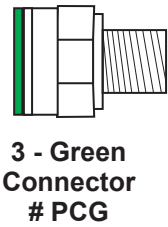
Cap Connector Repair

The EZ-FLO CAP-MBT has two connections to attach tubing to the cap. In the event of breakage, both connections are designed simple field repair.



The Cap Molded Butress Thread Repair Kit provides the necessary tools to make 6 end connection repairs

Part# CAP-MBT RK



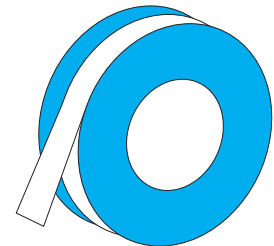
In addition to the kit, you will require the following tools:



Drill



Adjustable Wrench



Thread Tape

The adjustable wrench can be used in place of the drill but is not recommended

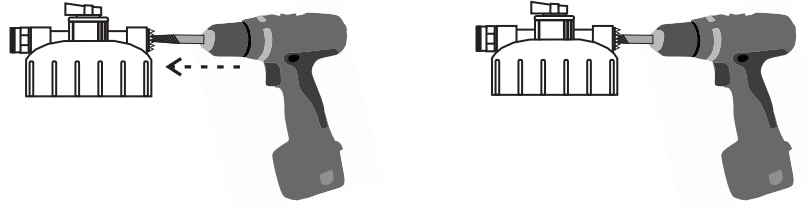
Cap Connector Repair

Step 1 - Remove the damaged end from the cap body using the #4 Extractor and Drill:

Insert the #4 Extractor into the drill

Set drill to **REVERSE**

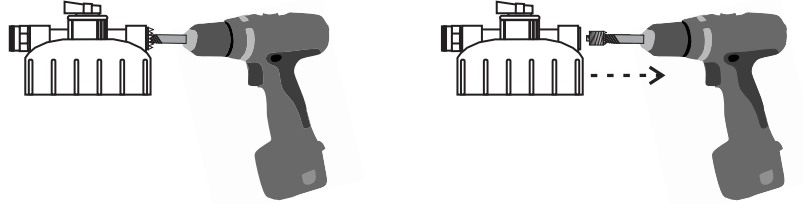
Insert the screw extractor into the broken fitting while depressing the power



Step 2 - With the drill slowly turning allow the screw extractor to wind out the damaged end of the broken cap connector fitting

Once the damaged portion is removed, pull away lightly/gently.

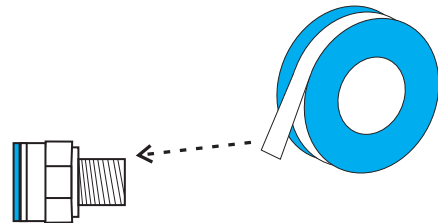
To remove the damaged portion from the extractor, switch the drill to the forward position and grip the broken piece with pliers while depressing the power switch



Step 3 - Apply 1 to 2 wraps of thread tape to fitting threads.

Do not cover small hole in fitting

May be cleared with small knife or finger if covered



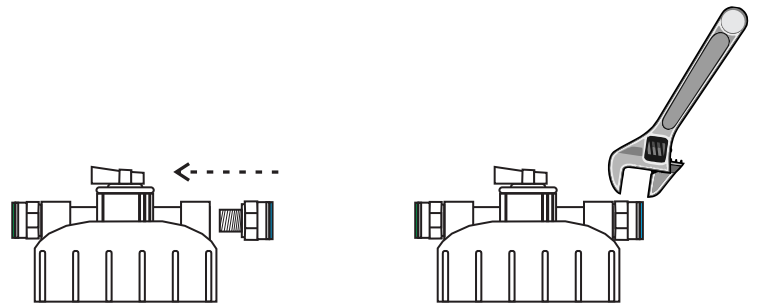
Step 4 - Insert the new fitting into the cap

Use hand to start fitting and rotate until difficult

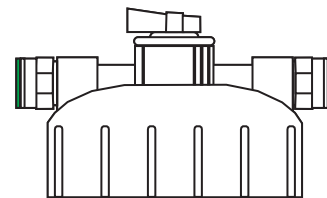
Complete tightening with adjustable wrench

DO NOT OVER TIGHTEN

The fitting may be tightened further while connected to the tubing and under pressure to spot any leaks if they occur



Completed Cap



Step 5 - Refer to the original instruction manual for steps related to connecting the system